

MANERA



ART ([HTTPS://MANERAMAGAZINE.COM/ARTE/](https://maneramagazine.com/arte/))



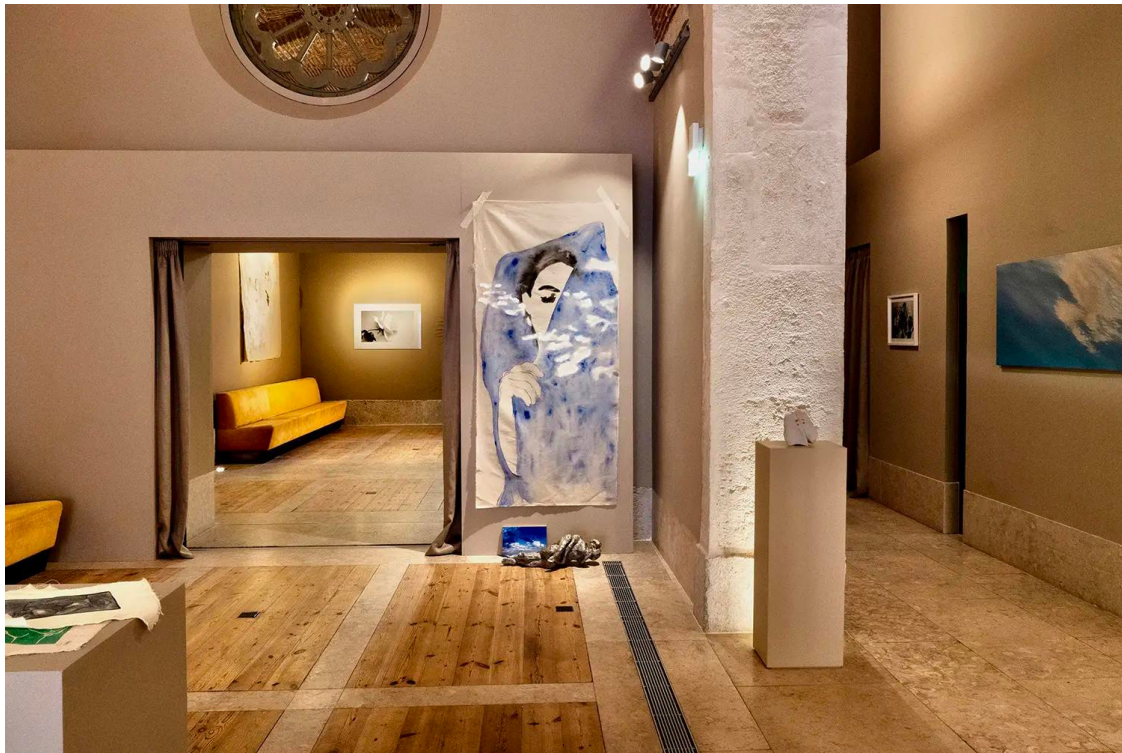
EVA CLAESSENS TURNS HER NEW
EXHIBITION IN LISBON INTO AN
INTIMATE AND SPONTANEOUS
MEETING BETWEEN FRIENDS

MANERA

The artist and her guest of honor, Julian Lennon, are exhibiting for the first time in the Portuguese capital. They do it in the recently inaugurated Criatura gallery, transferring the most personal and unknown atmosphere of this Belgian creator to the exhibition.

The house is the most intimate and our most personal space to which we can go. That area where one feels safe, protected. The RAE defines intimacy as something

spiritual, and the author Ana Sofia Pereira da Silva speaks of the intimate space as that which is “inhabited without a mask or protocol, the place of undressing. It is the place of the deep, the hidden, the intrinsic.” Perhaps that is why the artist Eva Claessens (<https://evaclaessens.com/>) has tried to transfer the entire atmosphere of her home-studio to the new exhibition *Eva Claessens & Friends: With Love From Nature* in the Criatura space in Lisbon.



The space is located under the Verride Palácio de Santa Catarina hotel, which has in fact opened its doors in 2023 with this exhibition. Photo: Julian Lennon

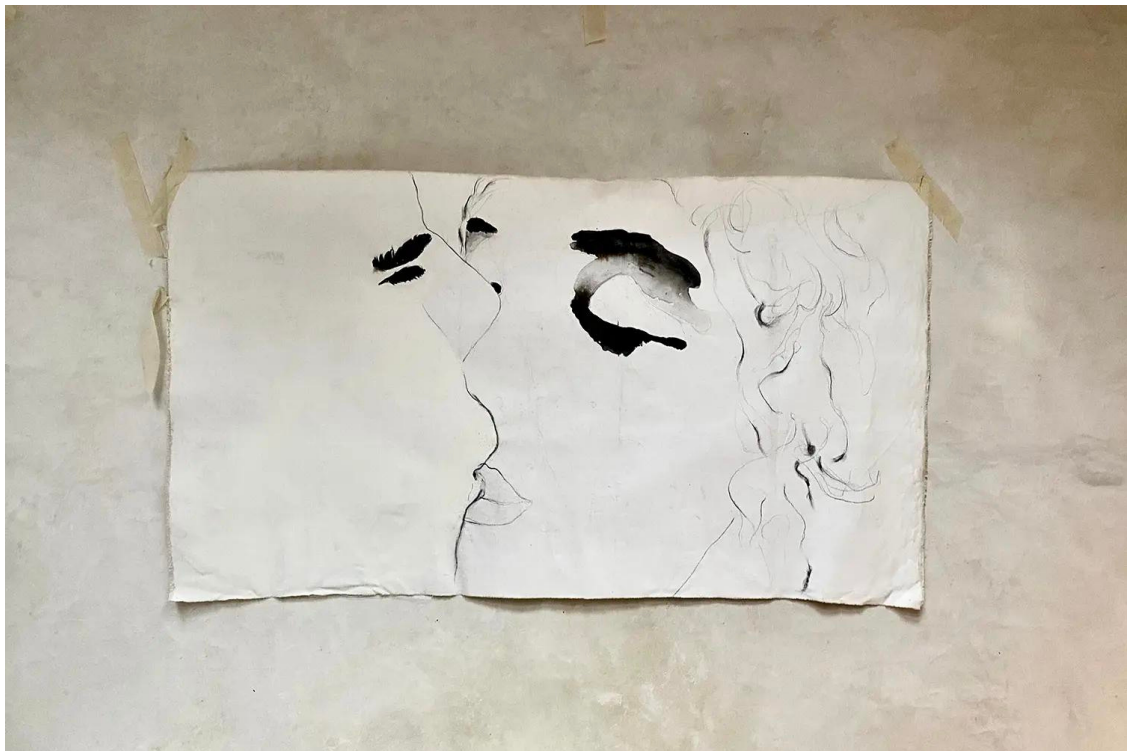
“I want people to feel my work, my aesthetics, as well as everything I need when creating,” the artist tells MANERA. “If at my house friends come and go, they help me and we catch up, here too.” And so it is, literally, because different loved ones will pass through the city of Lisbon until November 30, contributing their grain of sand to this immersion in the world of Eva Claessens. Although there is a person who accompanies her during the five weeks of the exhibition as a guest of honor: Julian Lennon (<https://julianlennon.com/>) . The conversation and artistic chemistry between the two can be felt in every corner of this exhibition (<https://maneramagazine.com/arte/>).

Art in another way

With priceless views of the Tagus River and the monumental 25 de Abril Bridge, the Verride Palácio de Santa Catarina hotel hides on its ground floor the first exhibition by Eva Claessens and Julian Lennon in the city, in a new cultural space. *Creature* is a difficult concept to define, perhaps precisely because it lacks definition. Kees Eijrond, its owner, was looking for something far from the static, an area where guests can learn about art, culture, music or literature, but in infinite ways. The truth is that the high, vaulted space, clad in 18th-century stone, seems custom designed for this exhibition.



Photo from Eva Claessens' studio, whose essence she has transferred to the Creatura space in Lisbon.



Eva never tightens the canvas on which she paints her work, so that the air and wind move it freely.

MANERA

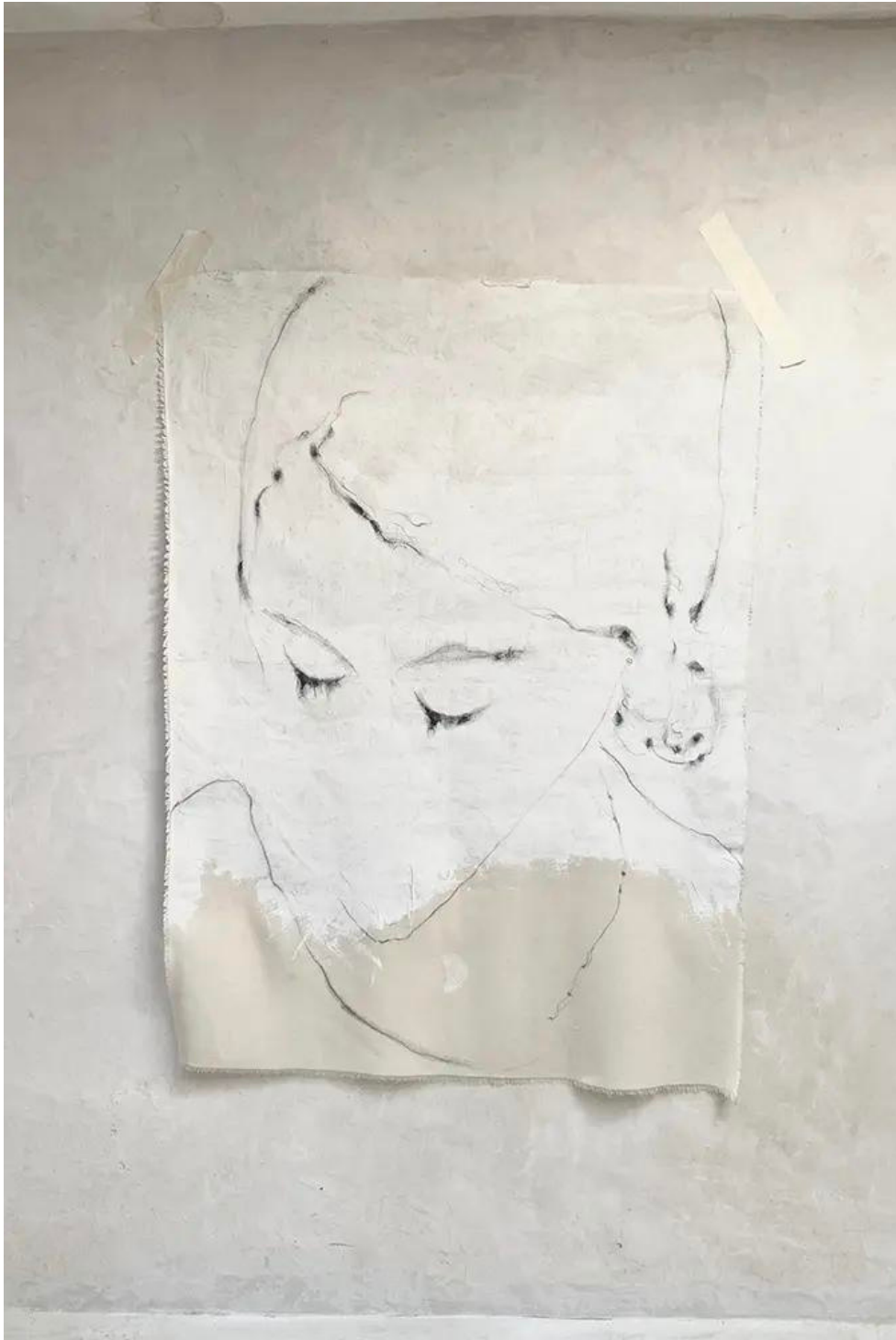
Feel the brushstroke

Eva's house has long known what it's like to get into cardboard boxes and catch a plane. Passing through the United States, Jamaica, India, Uruguay or France, her cargo lands in Lisbon with a selection of works among which you can find acrylic paintings, watercolors, handmade engravings and sculptures . They all capture a moment in time, an unfinished movement printed on the canvas with the utmost simplicity, like that of a closed eye: a fine line full of feeling. Whether with a free and undulating canvas, or through sculptures created at night, with candles, feeling the shape of her shadows, Eva's work is sensitivity; She tries to capture the emotion she feels at a particular moment.



The hug is one of the most recurring themes of the exhibition. In the image, the artist's pictorial work and sculpture coexist in space.

MANERA



The closed eye is an element full of feeling in Eva's work.

MANERA



Portrait of Eva Claessens working on a work in her studio. Photo: Mirabelwhite.

MANERA

Capture the movement

It is precisely that ability to capture a moment with the camera that made Eva fall in love with Julian's work. "What I like most about him as an artist is his gaze, he captures what happens between two photos," details the Belgian. Julian Lennon has been involved in the art world from a very early age, with an inherent gift for music. He has been exploring behind the lens of the camera for years, and when he saw the dresses he photographs for this exhibition in a vineyard in Provence, he had an artistic crush. "It's the most unusual thing I've ever seen," explains Lennon. "Those dresses with books and the world in their heads seemed like a bizarre romantic dance to me. I fell in love".

The movement, the dynamism, the distance from the static... It is something that both the artists Eva and Julian and the Creatura space have tattooed in their DNA . It is not surprising that Kees Eijrond and the team at Verride Palácio de Santa Catarina thought of them to inaugurate the gallery. "Julian is my best friend, my partner in crime , we create together as we breathe," concludes Eva while she waits, without haste, for a friend to arrive in Lisbon and share with visitors a new chapter of Eva Claessens and Friends: With Love From Nature.



Photographs Wedding Dresses by Julian Lennon for the exhibition. Photo: Julian Lennon.

MANERA



Photo by Julian Lennon next to a sculpture by Eva Claessens. To the left, you can see the 18th century vaulted ceiling that makes up the interior design of the gallery. Photo: Julian Lennon.

MANERA



Photo of Charlene from Monaco at her wedding photographed by Julian Lennon, along with sculptures by Eva Claessens and a flower chosen by Kees Eijrond. Photo: Julian Lennon.